

February 2019

## News from the Surrey Safeguarding Children Board

### Keeping children and young people safe

### Information and resources in Surrey



To keep professionals who work with children up to date with the latest developments in safeguarding children, the Surrey Safeguarding Children Board (SSCB) issues regular newsletters. If you have anything you would like to include please email [gary.wood@surreycc.gov.uk](mailto:gary.wood@surreycc.gov.uk). You can sign up to our newsletter via our website, please visit this page.

Simon Hart	Independent Chair SSCB
Amanda Quincey	Partnership Support Manager
Caroline Holmes	Partnership Support Secretary
Julie Speed	Child Exploitation, Missing and Hidden Crimes Coordinator
Ameena Tabassum	Quality Assurance Officer
Harpreet Sagoo	Interim Child Death Overview Panel (CDOP) Coordinator
Emily Welch	Child Death Overview Panel (CDOP) Coordinator
Anastasia Drenou	Training and Commissioning Officer
Jane Donson	Training and Commissioning Officer
Alex Vassallo	Training Administrator
Gary Wood	Quality Assurance Administrator

Please contact us on 01372833330 or visit our website at: [www.surreyscb.org.uk](http://www.surreyscb.org.uk)

*We start the New Year with a thanks to Claire Burgess, our outgoing interim Independent Chair for her support and contribution over the last 12 months and are pleased to introduce Simon Hart, our newly appointed Independent Chair. Over to Simon to welcome you to our first 2019 update newsletter:*

## **A message from Simon Hart, SSCB Independent Chair...**



*Hello, I am very pleased to be joining Partners in Surrey as the Independent Chair of the Safeguarding Children Board.*

*I recognise that this is a very important time as Surrey develops a strong focus on improvement to services for children, young people and their families. It is important that the Safeguarding Children Board takes an active part in all improvement plans and I am very encouraged by the positive responses already received from the Council and its Partners. It will be important that we carry this commitment through as the new Safeguarding Partnership develops to ensure we maintain a strong and engaged focus on safeguarding young people and their families.*

*I am also grateful to Claire Burgess, the outgoing Independent Chair, who has willingly given up time to ensure that I am well briefed on the Board's current direction of travel.*

*I hope to have a visible presence in Surrey and look forward to meeting and working with as many of you as possible.*

*Best Wishes  
Simon*

## **Changes across the Partnership**

### **Effective Family Resilience in Surrey (incorporating Levels of Need) – Launch and workshops**

We want to promote the upbringing of children within their birth families and will work with those families to ensure children can remain safely at home. The Effective Family Resilience document explains how together we will act as soon as problems emerge, share information and provide effective, timely support to enable children and their families to overcome difficulties and become more resilient so that they can manage future life challenges independently.

Some children need extra help to achieve their potential and this may be because they have additional needs or because of family circumstances or adversity or events outside their control. We want to identify and help these children and their families at the earliest opportunity in ways that do not leave them feeling singled out as different.

In Surrey there are many different agencies and voluntary and charitable organisations who come into contact with and support children and their families. All who work in these organisations whether trustees, staff or volunteers will be using the Family Resilience approach.

Early help may be offered at any point in a child or young person's life. We seek to offer support early to help families solve problems or to reduce the impact of problems that have already emerged.

To do this we need to work together in an open way with the child and their family to gain their confidence, identify strengths and needs, to find practical and achievable solutions, and to provide the right amount of information, advice and support.

The Early Help approach will be called '**Family Resilience**' and the Social Work practice model '**Family Safeguarding**'. Within this we have identified four levels of need: **Universal, Early Help, Targeted Help, and Specialist**. These are set out in more detail in this document but are summarised below.

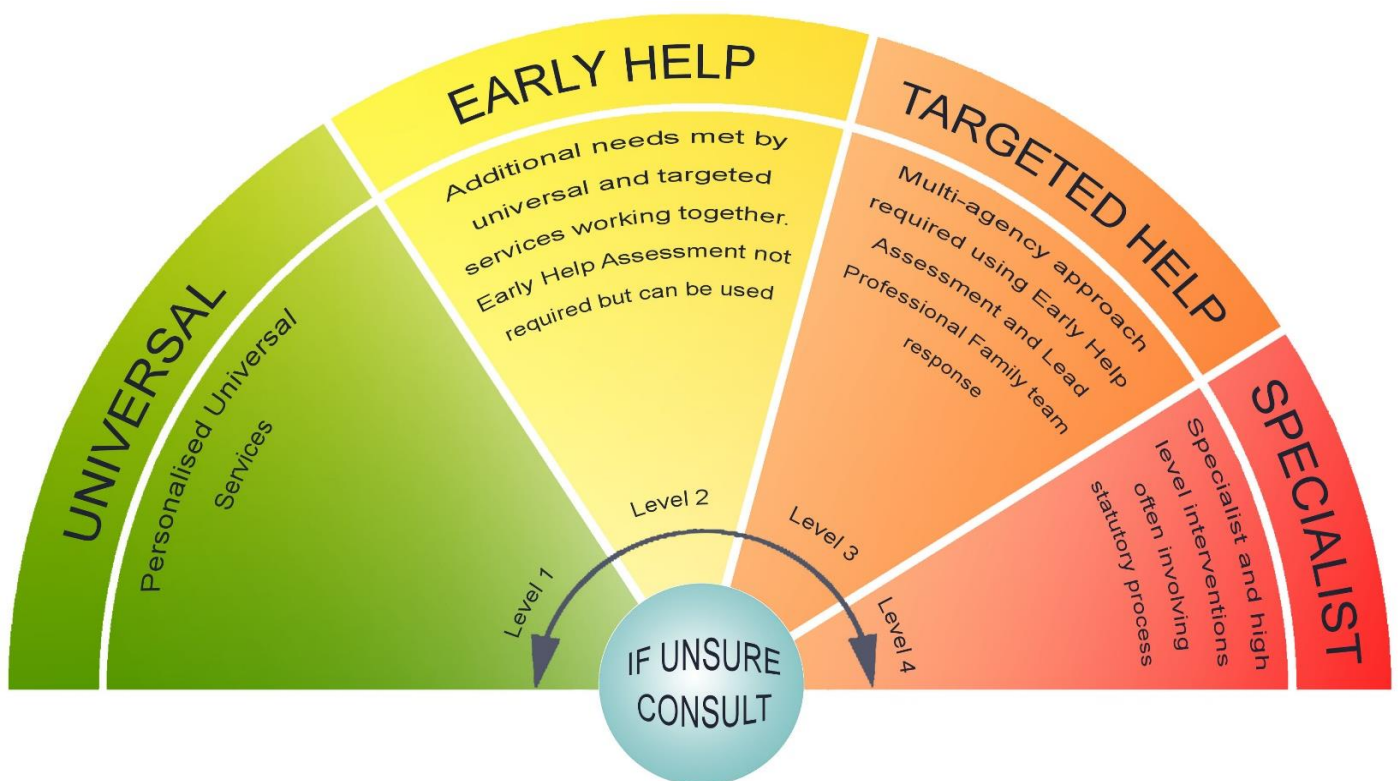
**Universal:** Children and young people who make good overall progress in most areas of development and receive appropriate universal services, such as health care and education. They may also use leisure and play facilities, housing or voluntary sector services.

**Early Help:** Children and young people whose needs require some extra support. A single universal or targeted service or two services are likely to be involved; these services should work together. A Team Around the Family meeting to share information and agree an Early Help Plan to support the child and family is helpful. No need for specialist services.

**Targeted Help:** Vulnerable Children. Children and young people whose needs are more complex. This refers to the range, depth or significance of the needs. A number of these indicators would need to be present to indicate need at Level 3. More than one service is involved, using a Team Around the Family approach, Early Help Plan and a Lead Practitioner to co-ordinate multi-agency support. Targeted Help can support at this level.

**Specialist:** Children and young people whose needs are complex and enduring and cross many domains. More than one service is normally involved, with a co-ordinated multi-agency approach and a Lead Professional, commonly in a non-statutory role. At times statutory intervention may be required.

## The Surrey Effective Family Resilience Windscreen



**Universal** services such as health visitors, midwives, GPs, schools and youth services are provided as of right to all children, including those with additional and intensive needs. Universal services in Surrey support all children and their families to help children be happy, healthy, learn, achieve their potential and become economically independent citizens.

Services for children with additional and more complex needs are sometimes known as **early help** or **targeted help** services, such as support for emotional wellbeing, additional help with learning in school, extra support to parents in early years or targeted help to involve young people through youth services.

Children are best supported by those who already work with them, such as children's centres, early years' settings or schools, who can organise additional support with local partners as needed. It is really important for that child and family that they are very clear about the help they are offered and the difference it makes to their lives. This is best done through an early help assessment and plan.

Children whose needs are more complex require support through a co-ordinated multi-disciplinary approach, involving an Early Help Plan and a Lead Professional to work closely with the child and family to ensure they receive all the support they require.

Children's mental health services, Educational Psychology, Speech and Language Therapists, Specialist teachers and SENCOs are examples of a targeted early help service. By working together effectively with children that have additional needs and by providing co-ordinated multi-disciplinary/agency support and services for those with complex needs, we seek to prevent more children and young people requiring statutory interventions and reactive specialist services.

**Specialist** services are where the needs of the child or family are so great that statutory and/or additional specialist intervention is required to keep them safe and to promote their development under Section 17 of the Children Act 1989 or Section 47 of the Children Act 1989.

We believe that if families get early help or targeted help, things will get better for them and they won't need specialist services. Everyone who works with them will come together to find the best way to help a family and try to stop problems before they happen. They'll be there to help when and wherever it's needed.

**Effective Family Resilience** for children and families is relevant to **everyone** who works in services that support families including the voluntary sector, adult mental health, community health, adult social care, housing and leisure.

It is **everyone's** responsibility to work together in Surrey to promote the welfare and development of our children.

**Please come to workshops to learn more. Book via the SSCB Website:**

<https://booking.surreyscb.org.uk/>

To read more about this work and access the full document, and windscreen, please look at the website [here](#).



### **Surrey Children's Services Academy**

The Surrey Children's Services Academy (SCSA) was launched at a conference on 17 January 2019. The Academy is being developed across agencies in Surrey and aims to co-ordinate learning and development and support practitioners who work with children and families. There are eight faculties and all practitioners will be encouraged to develop their skill, learning and careers through the Academy. This will ensure all staff have up to date knowledge and skills to fulfil their roles, reinforce consistent practice across all agencies, strengthen partnership working and ultimately improve outcomes for children and families in Surrey.



## News from the Surrey Safeguarding Children Board (SSCB)

### SSCB Annual Conference 2018

The Surrey Safeguarding Children Board (SSCB) held its third annual conference with the title 'Acting Early to Improve Outcomes for Children in Surrey' on Thursday the 29<sup>th</sup> of November 2018 in H.G. Wells Conference Centre in Woking, Surrey. The conference was very well attended by approximately 500 delegates that ranged from strategic leaders to front line practitioners from different organisations. The day started with Claire Burgess, the SSCB Independent Chair, opening the conference and Dave Hill, Surrey County Council (SCC) Director of Children, Schools and Families, presenting SCC's vision for children and families in Surrey.

Following that, nationally renowned experts, young people and local strategic leaders spoke about neglect, early help and fabricated and induced illness. Specifically, Kerry Littleford spoke compellingly about her personal experience of neglect during childhood, whereas Dez Holmes gave an engaging presentation on humane, evidence-based practice focusing on neglect and early help. Donna Molloy outlined the importance of early intervention in improving outcomes for children and Jacquie Burke and Lisa Burshill gave an overview of the Early Help offer in Surrey. Chris Hickford, CEO of the Eikon charity, summarised the services available by the organisation and Chloe, a service user, spoke about hers and her peers' personal experiences and the positive impact Eikon practitioners had in their lives. Gina Munday and Isaac Bury, gave a powerful presentation about their experiences and their involvement with the CAMHS Youth Advisor service and the Rights and Participation team of SCC. Finally, Dr Danya Glaser gave an informative presentation on fabricated and induced illness.

At the end of the day, each delegate was asked to evaluate how helpful each presentation was for improving their practice on a scale 0 – 5, with 0 being 'not at all' and 5 being 'extremely'. They were also encouraged to include comments and suggestions for future events. 137 feedback forms were returned and all presentations received marks between 3 and 5 mostly. Therefore, the majority of practitioners felt that their practice can benefit from attending this learning event. The comments included remarks such as: brilliant speakers, relevant to my practice, insightful explanations, excellent presentations, fascinating stuff, etc. In regard to future events, most delegates suggested learning events on contextual safeguarding, children with disabilities and events focusing on specific age groups, e.g. early years, primary school age, etc. They also suggested that the conference format should revert to a combination of plenary presentations and themed workshop.

### SSCB Learning and Development

The [2018-19 SSCB training programme](#) is available on the SSCB website. Details and bookings for the range of multi-agency foundation modules and more specialist training opportunities are through this link. All training has been reviewed and revised to reflect national and local changes and priorities. For example Child Sexual Exploitation has been refreshed to include County Lines, Drugs Supply and Gangs with reference to Modern Slavery and Prevent radicalisation and extremism. The new full day training is renamed Child Exploitation and Building Resilience. If there are any Multi Agency Safeguarding training areas that you would like us to provide, please let us know.

For all future dates, venues and availability of SSCB Training Courses, please use the link below:  
<https://booking.surreyscb.org.uk/events-list>

### Internal trainers

We are looking for practitioners from across the partnership to support the delivery of foundation and specialist training. Do contact us or join us at one of our Train the Trainer sessions to familiarise yourself with the materials or contact Surrey Safeguarding Children Board Training - [sscb.training@surreycc.gcsx.gov.uk](mailto:sscb.training@surreycc.gcsx.gov.uk) and we will make contact with you. See [here](#) for more information on how you can help.

## Neglect

The refreshed Neglect Strategy 2017-2020 is available on the SSCB website. The SSCB have produced a Neglect Bulletin which looks at the signs and risk factors around neglect and the effect on children & young people. You can find the bulletin [www.surreyscb.org.uk/about-us/strategic-documents/](http://www.surreyscb.org.uk/about-us/strategic-documents/)

## Serious Case Reviews

The SSCB is currently undertaking six Serious Case Reviews, 3 partnership reviews and one multi-agency audit. As each review is completed, the reports which include good practice and learning will be summarised [here](#)

## SSCB Policies and Procedures

We publish our current and revised policies (on our website's [procedures manual](#)).

[5.36 Reasonable Punishment and smacking](#)

[5.6 Working with Sexually active young people](#)

[5.19 Children Missing Education policy](#)

[4.7 Strategy Discussions and Section 47 Enquiries](#) Please note that there are no changes to these procedures but we would like to remind practitioners of their role and responsibilities within Strategy meetings.

## Surrey Child Death Overview Panel (CDOP)

The Surrey CDOP Protocol [www.surreyscb.org.uk/professionals/guidance-protocols/child-deaths/](http://www.surreyscb.org.uk/professionals/guidance-protocols/child-deaths/) which is widely distributed to relevant agencies as part of the CDOP Information Booklet is available on the [SSCB website](#) along with further information regarding the local CDOP process in Surrey. Please also see the SSCB procedures manual for further information on [Role of the Child Death Overview Panel](#) and [Unexpected Child Deaths](#).

Surrey CDOP have developed local information leaflets for parents, carers and families explaining how we review when a child dies which can be found on the SSCB child death webpages for [professionals](#) and [parents and carers](#).

## Child Exploitation, Missing and Hidden Crimes

Surrey Police have recently updated their Missing Persons webpage: What to do if you believe someone you know has gone missing. This is for adults and children. To read more click [here](#).

## County Lines

These are short films about the drug smuggling business, County Lines. These short films are produced by the Children's Society and Metropolitan Police (Lewisham) about child exploitation and county lines.

The first film explains what County Lines is and how it effects young people across the country.

<https://youtu.be/3lLaquFXHr4>

The second film looks at what to do next if you find out your child or a young person you know is involved in County Lines. <https://youtu.be/zYzX1Y27Bjs>

## Surrey Police Partnership Intelligence

Surrey Police wants partners to share intelligence on crimes being committed within the community. This will help the Police to develop local intelligence to better protect the public. You can read more of the guidance and form to use [here](#).

## Quality Assurance Section 11 Audit

The tool is for agencies to assess their current compliance and use it to develop an improvement plan. Analysis will be done on the responses to allow the SSCB to gain an overview of the general position around the County. Following completion of the toolkit, organisations requiring additional work and/or

clarification will also be invited to attend a Section 11 Scrutiny Panel meeting. A report will be produced summarising the findings of the overall Section 11 process together with an action plan for improvement. For further information please visit <https://www.surreyscb.org.uk/professionals/quality-assurance-evaluation/section-11-audit/>

The latest audit and findings will be available after mid-February and will be able to be accessed via the SSCB Website.

## DfE Updates



### **Working Together to Safeguard Children 2018**

The 2018 version of: statutory guidance on inter-agency working to safeguard and promote the welfare of children was published on 4 July 2018.

[www.gov.uk/government/publications/working-together-to-safeguard-children--2](http://www.gov.uk/government/publications/working-together-to-safeguard-children--2)

A [version of the guidance for young people](#) and a separate [version suitable for younger children](#) are also available for practitioners to share.

### **Disqualification under the Childcare Act 2016**

On 31 August 2018, this guidance, which can be viewed [here](#), replaced the current version of *Disqualification under the Childcare Act 2006*, which was last issued by the Department for Education in June 2016.

The guidance sets out:

- The responsibilities of local authorities (in the exercise of their education functions) and schools;
- What they need to do to comply with the legislation;
- Who is covered by the arrangements – including the changes to the arrangements for staff who live in the
- same household where a disqualified person lives or is employed;
- The circumstances where staff should be directed to apply to Ofsted to waive disqualification.

**The Department for Education** has published revised [Keeping Children Safe in Education](#) statutory guidance for schools and colleges, which started on 3 September 2018. Keeping Children Safe in Education is statutory guidance that schools and colleges in England must have regard to when carrying out their duties to safeguard and promote the welfare of children.

**Guidance on information sharing 2018** for people who provide safeguarding services to children, young people, parents and carers was also published on 4 July 2018 and can be downloaded from the GOV.UK website [here](#). This replaces 'Information sharing: advice for practitioners providing safeguarding services (2015)

## Keeping children and young people safe

### **Prevent Referral Process**

On Monday 24<sup>th</sup> September 2018, a new pilot scheme is being launched across Surrey to streamline the way statutory agencies can report a Prevent concern to the police and Multi-Agency Safeguarding Hub. The new Prevent referral form is attached here [www.surreycommunitysafety.org.uk/prevent/](http://www.surreycommunitysafety.org.uk/prevent/) which from 24<sup>th</sup> is the only way to submit a concern that someone may be vulnerable to radicalisation or extremism. To assist this new process, we have created a "Front Door for Prevent" to avoid agencies having to duplicate information on separate referrals. The new email address [preventreferrals@surrey.pnn.police.uk](mailto:preventreferrals@surrey.pnn.police.uk) has been created which will share the form with both the police and the MASH, to allow the safeguarding concerns to be assessed alongside any police risk.

Should you have any questions or want to give feedback about the process, please contact Claire McDonald, Prevent Supervisor for Surrey on 01483 632982

## Developing contextual responses to the abuse & exploitation of young people



If you haven't already, sign up to the Contextual Safeguarding Network (University of Bedford) for free resources and regular updates  
<https://www.contextualsafeguarding.org.uk/>

## UK Safer Internet Centre is launching its UK Safer Internet Day on the 5th of February 2019



Safer Internet Day will be celebrated globally on Tuesday 5th February with the slogan: 'Together for a better Internet'. Coordinated in the UK by the UK Safer Internet Centre the celebration sees hundreds of organisations get involved and join a national conversation about using technology responsibly, respectfully, critically and creatively.

Please feel free to use this link to the direct page for more details. <https://www.saferinternet.org.uk/safer-internet-day/2019> There is also a link to the SSCB Website page: [www.surreyscb.org.uk/?s=internet](http://www.surreyscb.org.uk/?s=internet)

The UK Safer Internet Centre is a partnership of three leading organisations: [Childnet International](#), [Internet Watch Foundation](#) and [SWGfL](#), with one mission – to promote the safe and responsible use of technology for young people. The partnership was appointed by the European Commission as the Safer Internet Centre for the UK in January 2011 and is one of the 31 Safer Internet Centres. See following link for further details: <https://www.betterinternetforkids.eu/>

## Surrey Sexual Health Services

The latest update on young people's sexual health services can be found on the [Healthy Surrey website](#). Here are a few articles and links that should be of interest to partners. Surrey commission Central and North West London NHS Foundation Trust to provide Surrey sexual health services and some of the services include:

- Online contraception services provided in Surrey that young people may not be aware of. This has just started in January. This is for new and existing patients. The process is quick and easy: [www.sexualhealth.cnwl.nhs.uk](http://www.sexualhealth.cnwl.nhs.uk)
- A Sexual Health assessment is also available. The patient will be asked to complete a health self-assessment. Every questionnaire is reviewed by a clinician and if any answer indicates that they are not eligible for contraception, or a more detailed face-to-face clinical consultation is required.
- Sexual health Testing kits are also available online, for residents in the County. <http://www.sexualhealth.cnwl.nhs.uk/surrey-kits>
- There is a Professional's factsheet for Surrey Integrated Sexual Health and HIV Services. This includes various links for services and address of clinics. <http://www.healthysurrey.org.uk/your-health/sexual-health>

## NSPCC Learning

The NSPCC has launched NSPCC Learning, a new website with the latest child protection and safeguarding news, information and training. The new website brings together information and resources for professionals working in safeguarding and child protection in one central point including: the latest research, child protection statistics, leaflets, practical guidance, briefings and evaluations; and information on key topics including resources to keep children safe in schools and colleges. You can visit the website [here](#).

The NSPCC logo, consisting of the letters 'NSPCC' in a bold, green, sans-serif font.

## Children's Commissioner's 2018 report into Childhood Vulnerability

The Children's Commissioner for England, Anne Longfield, is publishing a new report that brings together a range of information held by various government departments, agencies and others to reveal the scale of child vulnerability in England.

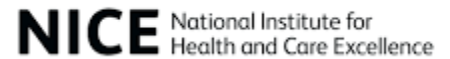


- The Children’s Commissioner’s report into childhood vulnerability estimates 2.1 million children in England, one in six, are living vulnerable lives due to complex family circumstances.
- 1.6 million ‘invisible’ children are living in vulnerable situations but receiving no known support or help from the system.
- Report estimates 825,000 children are living in a family with domestic violence and that over 100,000 children are living in a family with the so-called ‘toxic trio’ of domestic violence, mental health and alcohol or substance abuse.

The report can be found [here](#).

## Therapeutic interventions after abuse and neglect

The National Institute for Health and Care Excellence (NICE) have produced a guide for practitioners and managers supporting children, young people and families after abuse and neglect. Abuse and neglect can have a long-lasting impact on the health and wellbeing of children and young people. It is important to know how to respond, and the evidence suggests that the following interventions may be effective for children and young people. If possible, offer a choice and explain what each intervention will involve and how you think it may help. Not all interventions will suit everyone, and the choice should be informed by a detailed assessment. To find out more click [here](#).



## Growing up neglected: a multi-agency response to older children

This report is about the third joint targeted area inspection programme, which began in May 2017 and examined ‘the multi-agency response to older children who are living with neglect’.

This report considers the most significant learning from six inspections of local authority areas with a focus on the neglect of older children. The inspections reviewed practice in children’s social care, education, health services, the police, youth offending services and probation services. The report recognises that much has been done by agencies to address neglect of younger children but it calls for a greater awareness of the neglect of older children and a focus on trauma-based approaches to tackling it. It also calls for a greater awareness among professionals in adult services of the risks of neglect of older children who are living with parents with complex needs. The report was published in July 2018 and can be found here [www.gov.uk/government/publications/growing-up-neglected-a-multi-agency-response-to-older-children](http://www.gov.uk/government/publications/growing-up-neglected-a-multi-agency-response-to-older-children)

## Stop it now! Together we can prevent child sexual abuse



Stop it Now! UK and Ireland is a child sexual abuse prevention campaign and Helpline. It is run by the [Lucy Faithfull Foundation](#), the only UK-wide child protection charity dedicated solely to reducing the risk of children being sexually abused.

## National Accident Prevention Strategy

The Royal Society for the Prevention of Accidents (ROSPA) has published its National Accident Prevention Strategy. The strategy advocates an important role for public health at national and local level, as well others such as the NHS, local authorities, employers, housing providers and a number of government departments. Whilst the report recognises that the rates of injuries and deaths from many types of accidents

has fallen, other types of accidents have increased and overall there are still very high numbers of people who lose their lives or have their lives permanently affected by avoidable accidents. The strategy, Safe and Active at All Ages, is available [here](#).

## Brighter Futures for Gypsy Roma Travellers Children and Young People

A short you tube film called 'Brighter futures for GRT children and young people' can be found [here](#) on the Surrey Gypsy Traveller Communities Forum [website](#).

## Railway Children: Safeguarding on Transport

The [Railway Children](#) reports that in the UK 100,000 children run away each year and 18,000 sleep rough or with someone they've just met, putting them at risk of violence, abuse and exploitation.



Their Safeguarding on Transport programme focuses on identifying and supporting vulnerable children and adults who use the UK transport system to escape their problems and reach them before abusers can.

They work closely with the transport industry and the Department for Transport (DfT) and policymakers to ensure systems are in place to protect and support vulnerable people.

## Report on prevent gang and youth violence

The Early Intervention Foundation has produced a report on the role of primary schools. For more information see [here](#).



## Catch22 Surrey Young People's Substance Misuse Service

Catch22 Surrey Young People's Substance Misuse Service provide the following:

- 1 to1 treatment support for young people 11-21 whom need advice, or support for problematic drug or alcohol misuse, including those at risk of exclusion (accessed using our referral form)
- 24/ 7 Helpline number for young people and their families **08006226662**
- Family support of a young person where appropriate.

We also provide Schools, colleges and partner agencies targeted support which includes:

- Targeted group work for young people whom need advice, guidance and support for substance misuse issues.
- Advice, training and support to teachers and staff on how to respond to and support young people with substance misuse issues.
- Consultation and advice for professionals who are working with a young person who is misusing substances

For further information on catch22, referral forms and leaflets please access via our [website page](#).

**For advice and guidance on PSHE drugs education:**

All schools can access supportive documentation, including an electronic version of this guidance at [www.surreyhealthyschools.co.uk](http://www.surreyhealthyschools.co.uk)

### Getting in touch

24/7 helpline for young people and their families 08006226662

T 01372 832905

Text 07595088388

Email [ypsm@catch-22.org.uk](mailto:ypsm@catch-22.org.uk)

Website [catch-22.org.uk/surrey-substance-misuse](http://catch-22.org.uk/surrey-substance-misuse)

Facebook & Twitter Catch22 YPSM

## Catch 22 #CSE18

Catch 22 has produced a peer champion's film for #CSE18 to focus on internet safety and the need for young people to be themselves online. For more information see [here](#):

## Chat Health - Surrey Text Service

Chat Health is a text service enabling young people at secondary school to reach out to a school nurse team to ask for help on a range of issues confidentially. This is available Surrey wide. For more information see [here](#).

## Surrey Young Carers

Please visit the following website for support for young carers living in Surrey. <https://www.surrey-youngcarers.org.uk/>

## Domestic Abuse Awareness and Multi Agency Training.

Preventing and responding effectively to domestic abuse is a priority for all agencies. Agencies can have a basic awareness of domestic abuse. This will result in a shared understanding of the complex issues surrounding the problem. Appropriate assessments and responses will be made.



Information and guidance for agencies about domestic abuse and multi-agency training courses in Surrey can be found [www.surreyscb.org.uk/sscb-multi-agency-training-programme/our-training-programme/](http://www.surreyscb.org.uk/sscb-multi-agency-training-programme/our-training-programme/)

## National Accident Prevention Strategy

The Royal Society for the Prevention of Accidents (ROSPA) has published its National Accident Prevention Strategy. The strategy advocates an important role for public health at national and local level, as well others such as the NHS, local authorities, employers, housing providers and a number of government departments. Whilst the report recognises that the rates of injuries and deaths from many types of accidents has fallen, other types of accidents have increased and overall there are still very high numbers of people who lose their lives or have their lives permanently affected by avoidable accidents. The strategy, Safe and Active at All Ages, is available [here](#).

## Information and Resources

**There is a wide range of advice available to Children and Families available online which we hope will be useful for you**

### Support for Children



### **B**ecome (formally Who Cares Trust)

[Become](#) is a voice and a champion for children and young people in the UK living in care. We believe that every child in care should receive the support, encouragement and opportunities they need to enjoy their life and to achieve.

### **C**hildnet International

Childnet International is a non-profit organisation working with others to help make the internet a great and safe place for children. You can visit the website here: <http://www.childnet.com/>

### **C**areers Advice in Surrey

Alongside guidance from a school/college careers advisor or any other practitioner providing support, this site is designed to guide you through the options - of which there are many - to help you make informed decisions about what route might be most suitable. It's also important that you do your own independent research so that you can be confident that no opportunity has been missed. Visit the website here: <http://www.careersadviceinsurrey.co.uk/>

## **Catch22**

[Catch22 Surrey Young people's Substance Misuse Service \(SYPSMS\)](#) is a county-wide specialist treatment service, offering; one-to-one support to young people and their families, a 24 hour help line, counselling and pharmacological support, as part of a tailored recovery approach for young people aged 11 to 21-years-old.

**Digital Parenting Magazine.** This is a free magazine aimed at parents / carers produced by Parent Info and Vodafone. Magazine and delivery are both free. Link is here for ordering: <https://www.vodafone.com/content/digital-parenting.html/>

## **Galop – The LGBT + anti-violence charity**

Galop provides Emotional and practical support for LGBT people experiencing domestic abuse. Abuse isn't always physical- it can be psychological, emotional, financial and sexual too. Visit their website here: <http://www.galop.org.uk/domesticabuse/>

## **Kooth**

Surrey CAMHS now offers preventative support to children and young people who don't have a referral to the service through [Kooth](#). Kooth is a safe, confidential and anonymous online service for young people, specifically developed to make it easy and safe for young people to access mental health support as and when they need it, while removing any associated stigma. Once signed up, Kooth users have access to BACP trained counsellors until 10pm, 365 days a year peer-to-peer support through moderated forums, and a range of self-help materials, co-written by other young people. Any young person aged 11 – 19th birthday with a Surrey postcode can access the service for free.

## **Kidscape**

Kidscape equip young people, parents and professionals with the skills to tackle bullying and safeguarding issues across the UK. You can visit their website [here](#).

## **Rise Above**

Rise Above is where you will find interesting and useful stuff from the web and beyond to get us all talking about the things that matter to us. You can visit the website here: <http://riseabove.org.uk/>

## **Stop it Now! Helpline**

A confidential Freephone helpline for anyone with concerns about their own sexual behaviour, thoughts or feelings towards children, or that of another adult or young person, to seek information, advice and support – 0808 1000 900, [www.stopitnow.org.uk](http://www.stopitnow.org.uk)

## **The Mix**

Whether you're 13, 25, or any age in between, [The Mix](#) take on the embarrassing problems, weird questions, and please-don't-make-me-say-it-out-loud thoughts you have and give you the information and support you need to deal with it all. They can connect you to experts and peers who'll give you the support and tools you need to take on any challenge you're facing – for everything from homelessness to finding a job, from money to mental health, from break-ups to drugs. The Mix are free and confidential multi-channel service.

**Thinkuknow** is an education programme from CEOP, a UK organisation which protects children both online and offline. There are six [Thinkuknow](#) websites for advice about staying safe when you're on a phone, tablet or computer.

## **Zipit App (Childline)**

The new Zipit App is aimed at children for them to download and use if someone asks them to send a naked selfie. They can then use the app to use images on zipit to reply. If someone's trying to get them to send naked images, they can use the images on Zipit to keep the situation in control. For more information visit the Child Line website [here](#)



## Support for Families

### **B**e Share Aware - and keep your child safe online (by NSPCC)

We tell our children it's good to share - but online it's different. In fact sometimes sharing online can be dangerous. Being [Share Aware](#) will help keep your child safe online.

### **C**EOP

CEOP (Child Exploitation and Online Protection Command) is dedicated to keeping children safe from sexual abuse and grooming online. They can help and advise you and to make your child safe. [You can report to us if you are concerned that your child is being sexually abused or groomed online](#). This might be from someone they know or someone they have only ever met online. If you feel your child is in immediate danger, please call the police on 999.

### **D**omestic Abuse Support

The Surrey against domestic abuse website offers help and support for anyone in the county affected by domestic abuse. Visit [www.surreyagainstda.info](http://www.surreyagainstda.info) for more information.

### **D**igital Parenting

Issue 6 of [Vodafone's Digital Parenting magazine](#) is available now! (online only). Previous issues and further online resources for parents are available on the [Vodafone website](#).

### **F**amily Support Programme Surrey

This programme uses a whole family approach involving grandparents, parents, young people and children. It brings together a team of people and agencies with specialist skills to help families caught in a pattern of anti-social behaviour, unemployment, alcohol abuse and truancy. <https://www.surreycc.gov.uk/social-care-and-health/childrens-social-care/support-for-young-people-and-their-families/the-surrey-family-support-programme>

### **F**amily Information Service Surrey

The role of the [Family Information Service](#) is to connect families with the information and support they need. They do this by:

- Enabling families and practitioners to self-serve through the FIS website and Directory and the SEND Local Offer
- Helping families and practitioners find what they need through an enquiry service accessed online, by email or over the phone

FIS works closely with internal and external teams, organisations and partners including the Early Help Coordination Hubs and MASH to provide an information and advice offer for families and practitioners. Their aim is to ensure that there is a consistent information and advice offer across the County so that all families get the right information at the right time.

### **I**nternet Matters.org

Child Safety Online: A practical guide for parents and carers whose children are using social media. More information for parents and carers can be found on the [Internet Matters.org](http://InternetMatters.org) website.

### **N**SPCC

[NSPCC](#) are the leading children's charity fighting to end child abuse in the UK, Channel Islands and Isle of Man. They work with families when they're going through difficult times – like battling addiction or overcoming mental health problems, and offer all kinds of support – from helping new parents care for their baby to giving professionals the tools they need to assess neglect. The NSPCC also have a range of videos available.

## **O**ne Development Guides – Surrey

Families who live in Surrey are able to access **three** award-winning [online child development guides](#) for no cost. They are brought to residents by Surrey County Council and Children and Family Health Surrey, who will run the scheme as a pilot for one year.

## **P**arent Info

Parent Info provides high quality information to parents and carers about their children's wellbeing and resilience. This service is free and ranges across a wide range of subject matter, from difficult topics about sex, consent and relationships, mental health, self-harm, the internet and 'teens on tinder'. For more information, please visit the website: <http://parentinfo.org/>

## **P**arents Protect! Website

Online resource for all adults to learn about child sexual abuse and how it can be prevented. [www.parentsprotect.co.uk](http://www.parentsprotect.co.uk)

## **S**ands

[Sands](#) is a UK charity that works across the country to support anyone affected by the death of a baby; improve the care bereaved parents receive from health care and other professionals; and reduce the number of babies who do die by funding research and working closely with other organisations to create a world where fewer babies die.

## **S**urrey Safeguarding Children Board

Surrey Safeguarding Children Board (SSCB) aims to support professionals, parents and carers in keeping children safe and to provide advice and support on a wide range of topics. [Click here](#) to take a look at our Parents and Carers page.

## **T**he Breck Foundation

[The Breck Foundation](#) is raising awareness for playing safe whilst using the internet

## **T**he Lullaby Trust

[The Lullaby Trust](#) provides expert advice on safer sleep for babies, emotional support for bereaved families and raises awareness of Sudden Infant Death Syndrome (SID).

## **T**he Royal Society for the Prevention of Accidents (ROSPA) - Parent Hub

[RoSPA's Parent Hub](#) provides an easy guide to keep your children safe, from when they're a baby to school age.

## **Support for Professionals**

### **C**AMHS

Subscribe to the CAMHS newsletter [here](#)

### **C**hildcare professionals E-bulletin

Get the latest information about the childcare sector and training news from Surrey Family Services Supporting Children Team in our [Childcare professionals update e-bulletin](#). It's a must for all early years practitioners, playworkers, home-based childcare workers and Sure Start Children's Centre staff in Surrey

### **C**hallengers

Challengers provide inclusive play and leisure opportunities for disabled children and young people through schemes in Surrey, Hampshire and beyond. Please visit the [Challengers website](#) to view the dates and activity programmes.

### **E**arly Help Partnership Newsletter

Each month the Early Help Partnership newsletter will include updates from across the partnership about the progress we are all making to improve our early help services in Surrey.

### **E**ducate Against Hate website

'Educate Against Hate', gives parents, teachers and school leaders resources and practical advice on protecting children from extremism and radicalisation. The website can be accessed [here](#).

### **F**riends, Families and Travellers

The only national charity that works on behalf of all Gypsies, Travellers and Roma regardless of ethnicity, culture or background. FFT provide advice and consultancy, promote health and wellbeing, contribute to research and policy making, deliver training and much more. For further information and to sign up to their newsletter please visit [here](#).

### **M**indsight Surrey CAMHS: Mental health services for children and young people

Mindsight Surrey CAMHS, the health and social care partnership for children and young people with mental ill-health and learning disabilities living in Surrey. You can access the website [here](#).

### **N**eglect Bulletin

[www.surreyscb.org.uk/professionals/guidance-protocols/](http://www.surreyscb.org.uk/professionals/guidance-protocols/) Child Neglect aims to spread awareness of what neglect is, help you spot the signs and let you know where and how to access help and services.

### **N**SPCC CASPAR

The NSPCC offer a current awareness service for practice, policy and research (CASPAR) via a weekly email alert. The newsletter provides a weekly update on all current safeguarding and child protection news. The link to the registration form can be found [here](#).

### **S**urrey Safeguarding Children Board

Surrey Safeguarding Children Board (SSCB) aims to support professionals, parents and carers in keeping children safe and to provide advice and support on a wide range of topics. [Click here](#) to see our Resources for Professionals page.

### **S**urrey Schools Bulletin

[Schools Bulletin](#) is a regular round-up of education news (local and national) for primary, secondary, special and short-stay schools in Surrey. It is produced by the communications team and is published during term time.

### **S**urrey Youth Focus

As a charity Surrey Youth Focus' aim is to "significantly improve the lives of young people in Surrey". Surrey Youth Focus is described as the 'eyes and ears' of the voluntary youth sector. We have an extensive 'reach' and work with, and support, over 70 youth organisations (our members) ranging from large charities to local youth clubs. Please visit the [Surrey Youth Focus website](#) for more details.

### **W**histleblowing Advice Line

The new Whistleblowing Advice Line that the NSPCC Helpline has launched has been developed to provide support to employees wishing to raise concerns over how child protection issues are being handled in their own or other organisations. The NSPCC Whistleblowing Advice Line can be reached on: **0800 028 0285**. More information on the helpline is available on the [website](#).

### **Y**MCA WiSE Workers

[YMCA DownsLink Group's WiSE Project](#) is an innovative project working with children and young people.

### **Y**MCA East Surrey 'Face2Face' project

is a volunteer-led group of parents and carers who have a child or young person with a disability who offer friendship and support to other parents or carers of children with additional needs or disabilities. Find out how Face2Face can help you, visit the YMCA East Surrey website [here](#).